



Specifications

Introduction

REFLOMAX GLODIANTM VC-E7 & VC-I8 truck rear marking is a retroreflective micro-prismatic markings designed to mark the sides and rear of vehicles for enhanced visibility and detection.

REFLOMAX GLODIANTM VC-E7 & VC-I8 truck plank film is one type of sealing.

The sealed rear marking film consists of micor-prisms, sealed and backed with a pressure sensitive adhesive and release liner. Applied to properly prepared surface, REFLOMAX GLODIANTM VC-E7 & VC-I8 rear marking guarantees the period of 5 years of field performance.

- Acquired ECE70 Certification from UNECE
- Acquired AIS-089 Certification from ARAI

Retroreflective Performance

The values in Table 1 are minimum coefficients of retroreflection expressed in candelas per m2 per lux (cd.m-2 .lx-1)

Table 1 The minimum Coefficient of Retroreflection(R_A)

COLOR	Observation Angles	Entrance Angle	R_A
Yellow	0.2°	5°	250
		30°	180
		40°	75
		60°	10

Photometrics

REFLOMAX GLODIANTM VC-E7 & VC-I8 rear marking is available in yellow. The color shall be located in the region as defined by the chromaticity coordinates and luminance factors provided as shown in Table A, when measured in accordance with the provisions of CIE No. 15 and illuminated with the CIE standard illuminant D65 at angle of 45° to the normal (45° / 0° geometry).

The measured values shall be the average of 8 readings. The test sample shall be rotated 45 degrees.

The retroreflected color (nighttime color), when illuminated with CIE standard illuminant A at an observation angle of 20' and entrance angles of $\beta_1 = \pm 5^\circ$, $\beta_2 = 0^\circ$ shall be located within the area defined by the chromaticity coordinates as shown in below table.

Table 2 Daytime Color Specification Limits

COLOR	Chromaticity Coordinates*								Y%
	1		2		3		4		
	x	y	x	y	x	y	x	y	
Yellow	0.545	0.454	0.487	0.423	0.427	0.483	0.465	0.534	>0.16

Table 3 Nighttime Color Specification Limits

COLOR	Chromaticity Coordinates*							
	1		2		3		4	
	x	y	x	y	x	y	x	y
Yellow	0.585	0.385	0.610	0.390	0.520	0.480	0.505	0.465



76, Pureundeulpan-ro, 1010beongil,
Paltan-myeon, Hwaseong-si,
Gyeonggi-do, 18525, Rep. of Korea



TEL +82 (0)31-8014-9724
FAX +82 (0)31-8059-2130



www.reflomax.com

Application Instruction

REFLOMAX GLODIAN™ VC-E7 & VC-I8 rear marking is can be stuck to truck and trailers. In order to apply proper adhesion between tape and the cleand substrate, it must be installed at the temperature between 15°C and 38°C(64°F~100°F).

Before installation, all surfaces must be considered contamination and must be cleaned prior to application. Wash the surface with detergent and water to remove dirt and road film. Use a clean cloth with isopropyl alcohol to wipe the surface in one direction to avoid spreading contamination. Freshly painted surfaces should be dried for at least 3 weeks and completely cured. User must check the compatibility of the chosen lacquer with the paint before using the material. Self-adhesive reflective materials can only be used for dry applications. If the tensile strength of the material is low, the removal of the reflective film may be more difficult. After that immediately dry surface with a clean absorbent paper towel for the fine quality of adhesion.

Installation

- ① Clear surface properly
- ② Do not overlap marking.
- ③ Apply the material only on flat surface.
- ④ Ensure that the tape is applied without tension.
- ⑤ Installing underneath belts or buckles is not recommended.

Storage

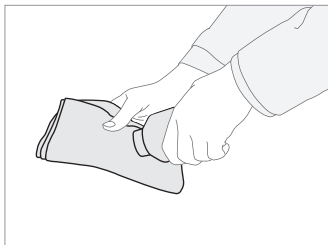
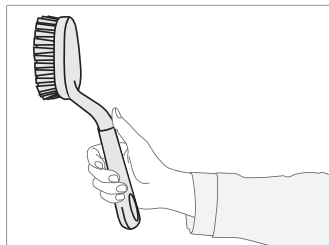
Store in a cool dry place, store at room temperature 18°~25°C (64°F~77°F) and 30%~50% R.H. and must be used within one (1) year after arrival date. Store rolls in their original cartons.

Size & Package

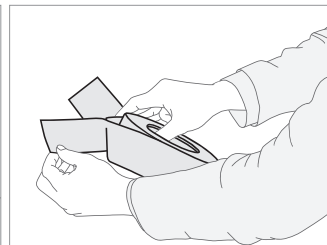
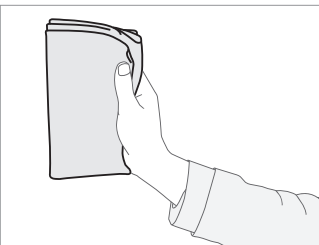
- **Product Size** 123cm(48.4") x 50YD per 1roll as standard.
- **Package** 40rolls per pallet / 320 rolls per 20' container
- **Gross** 29kgs(63.9lb)
- **Gross Weight** 31kgs(68.3lb)

How to install

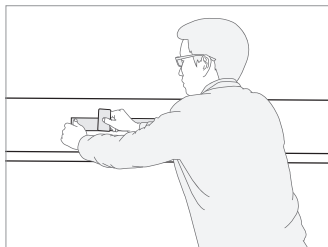
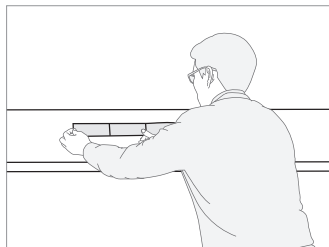
④ Clean the area where the tape is to be attached



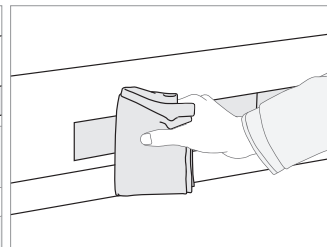
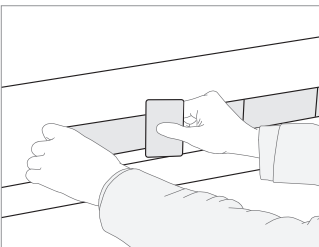
⑤ Remove the release film and attach tape



⑥ Use a card or squeegee to attach the entire surface



⑦ Clean/wipe the surface





Substrates

The application of REFLOMAX GLODIAN™ VC-E7 & VC-I8 rear marking is limited to properly prepared metal and painted metal substrates. It is advisable that users evaluate the operation carefully any film application to other substrates under actual

usage conditions. For painted surfaces, manufacturer's recommendations shall be followed for drying and curing. Imperfect film caused by other substrates, materials, contamination, or improper surface preparation is not under the responsibility of REFLOMAX.



Important

GENERAL PERFORMANCE CONSIDERSTIONS

Durability can be reduced if recommended techniques are not followed:

- Failure to cut markings around rivets, seams and body panels.
- Improper use of high pressure cleaning
- Spillage of chemicals or solvents.
- Improper application or surface preparation.
- REFLOMAX recommended procedures are followed
- Film is applied to vertical surfaces.

Save the limited remedy stated above, and except where prohibited by law, Reflomax will not be liable for any loss or damage arising from any Reflomax product, whether direct, indirect, special, incidental or consequential damages(including but not limited to lost profits, business or revenue in any way), regardless of the legal theory asserted including warranty, contract, negligence or strict liability.

Warranty

REFLOMAX GLODIAN™ VC-E7(ECE-70) & VC-I8(AIS-089) series("Product") are warranted to be free of defects in materials and workmanship at the time of shipment and to meet the specifications stated in this product data. If the Product is proven not to have met the Warranty on its shipment date, then a buyer is entitled to a refund or replacement of the Product.

User must determine the suitability of the product for its intended use before using the product. User must undertake all risks and responsibilities in this regard. All questions of warranty and liability claims relating to this product are subject to the terms of the sales and business where is applicable to the prevailing law.

No warranty is given for the purpose other than those listed in the Specifications Sheet, or for purposes not handled in compliance with Reflomax's processing and handling instructions. The durability of the product may depend on many factors such as recommended application guidelines, geographical areas, exposure conditions, and product maintenance and completion indicators. Reflomax is not responsible for defective product caused by improper surface treatment. For further information, please see the full warranty instrument available at www.reflomax.com.

GLODIAN™ is registered trademark of REFLOMAX CO., LTD.